

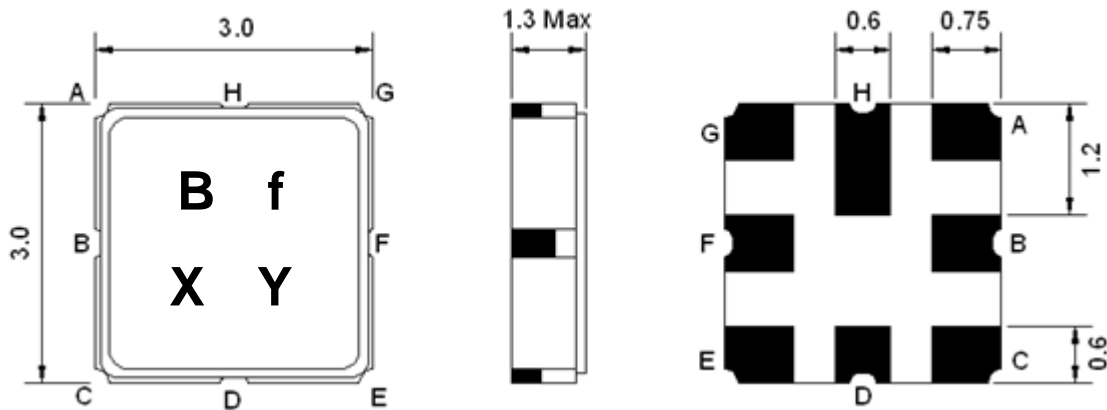
- CDMA, RF-Rx Balanced SAW Filter
- Revision 0: January 2013

Electrical Characteristics

MAXIMUM RATING				
PARAMETERS DESCRIPTION	UNIT	MINIMUM	TYPICAL	MAXIMUM
Operating Temperature Range	°C	-30	-	+85
Storage Temperature Range	°C	-40	-	+85
Maximum DC Voltage	V	-	-	0
Maximum Input Power	dBm	-	-	10
Source Impedance (unbalanced) ⁽¹⁾	Ω	-	50	-
Load Impedance (balanced) ⁽¹⁾	Ω	-	200//68nH	-
Package type & size	S21			
Length x Width	mm ²	-	3.0 x 3.0	-
Height	mm	-	-	1.3

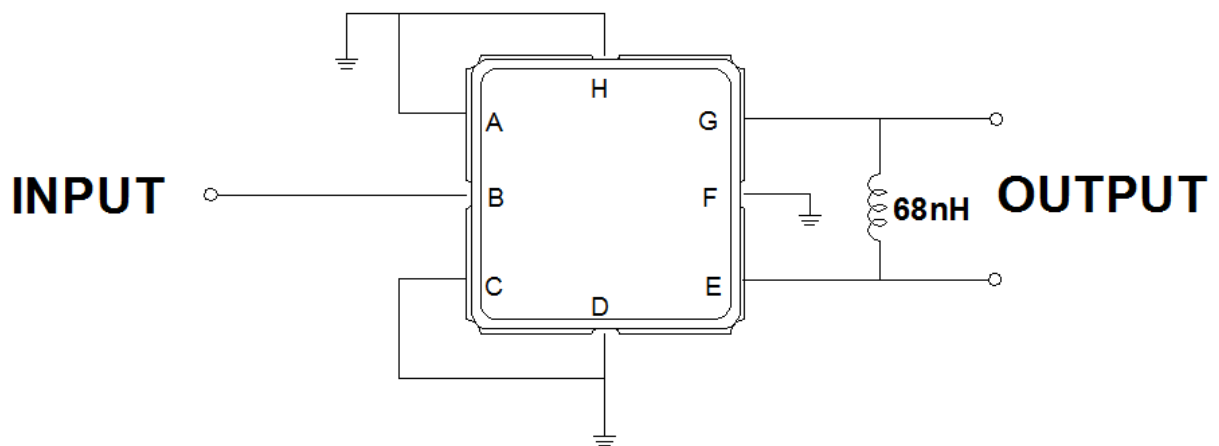
ELECTRICAL SPECIFICATION				
PARAMETERS DESCRIPTION	UNIT	MINIMUM	TYPICAL	MAXIMUM
Center Frequency (Fo)	MHz	-	836.5	-
Insertion Loss within 824.0 ~ 849.0 MHz	dB	-	1.9	3.0
Amplitude Ripple within 824.0 ~ 849.0 MHz	dB _{p-p}	-	0.6	1.2
Attenuation:				
300.0 ~ 800.0 MHz	dB	40	42	-
869.0 ~ 894.0 MHz	dB	25	28	-
894.0 ~ 950.0 MHz	dB	35	38	-
VSWR within 824.0 ~ 849.0 MHz	-	-	1.5	2.0

Notes: (1) With Matching Network

Package Dimensions


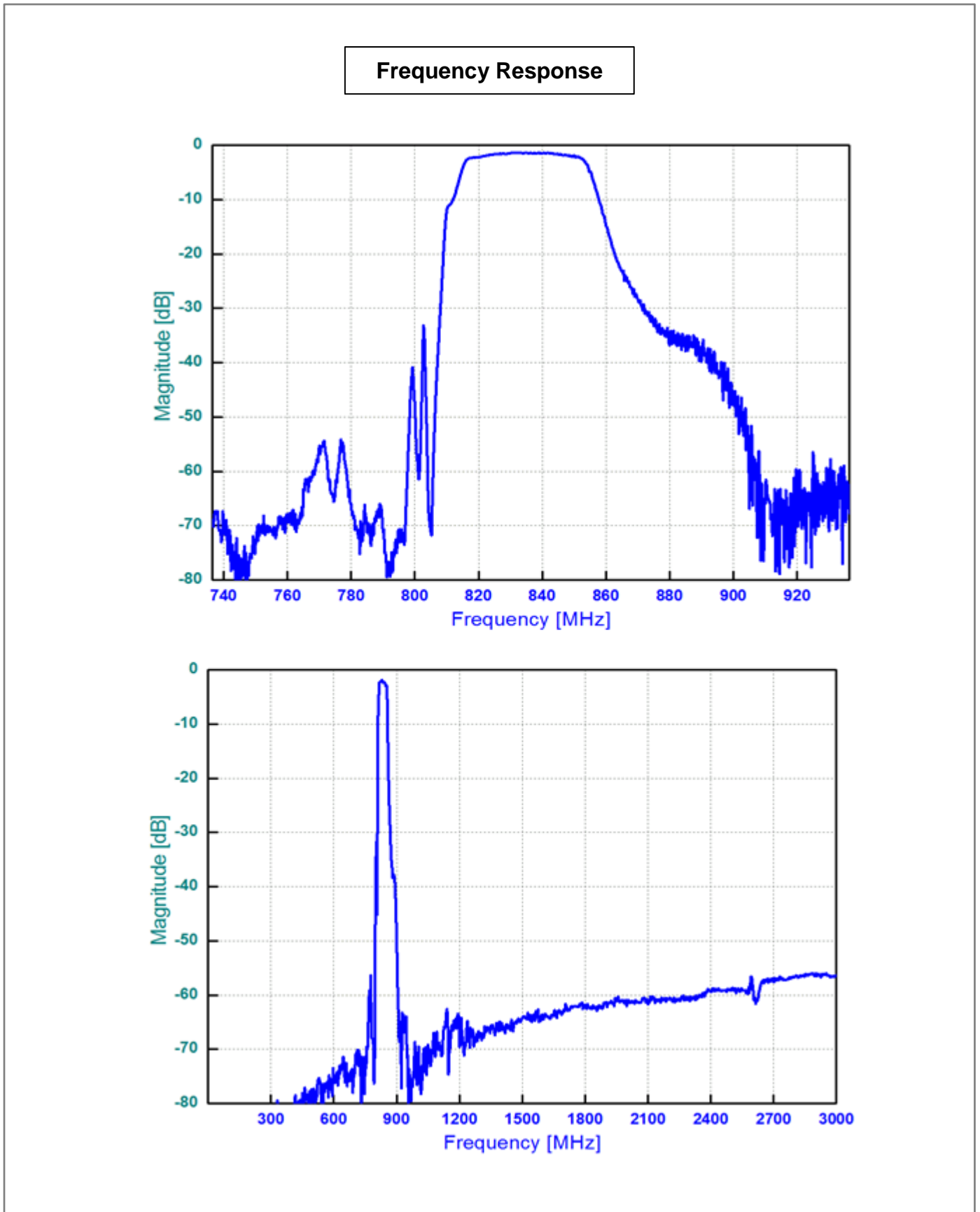
Marking Descriptions	
B	CDMA Application
f	Series Number
X	Date Code (Year)
Y	Date Code (Month)

Pin Description	
A, C, D, F, H	Ground
B	Input
E, G	Balanced Output

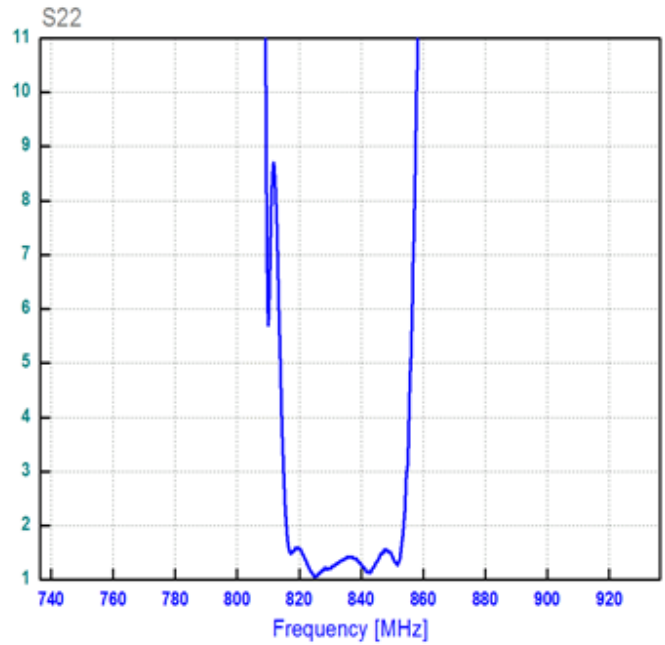
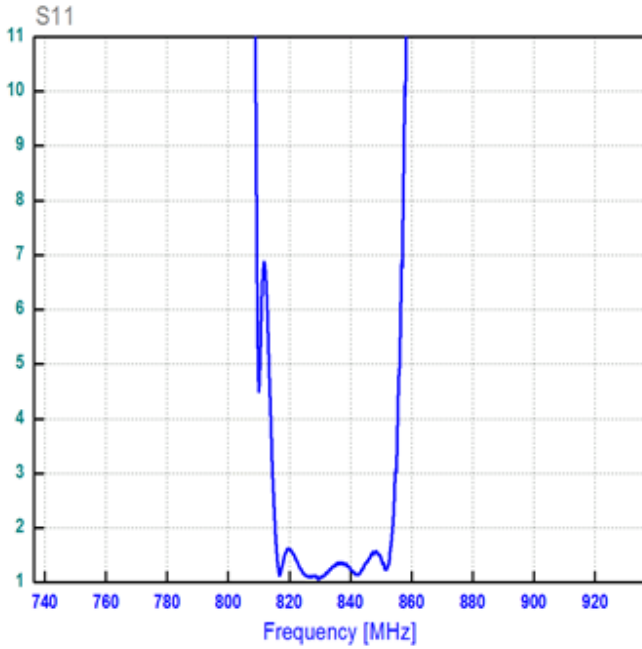
Testing Environment

 Source Impedance: 50 Ω

 Load Impedance: 200 Ω

Frequency Characteristics



VSWR



Smith Chart

