

- Remote Control, RF SAW Filter
- Revision 0: October 2010

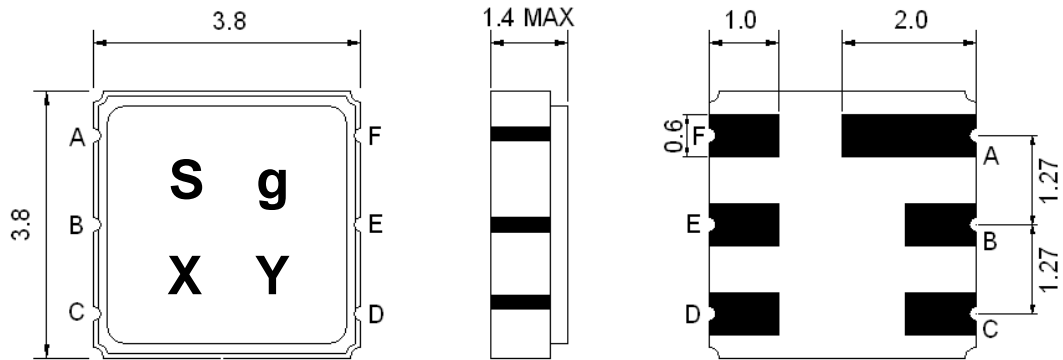
Electrical Characteristics

MAXIMUM RATING				
PARAMETERS DESCRIPTION	UNIT	MINIMUM	TYPICAL	MAXIMUM
Operating Temperature Range	°C	-40	-	+85
Storage Temperature Range	°C	-40	-	+85
Maximum DC Voltage	V	-	-	12
Maximum Input Power	dBm	-	-	10
Source Impedance (single ended) ⁽¹⁾	Ω	-	50	-
Load Impedance (single ended) ⁽¹⁾	Ω	-	50	-
Package type & size	P			
Length x Width	mm ²	-	3.8 x 3.8	-
Height	mm	-	-	1.4

ELECTRICAL SPECIFICATION				
PARAMETERS DESCRIPTION	UNIT	MINIMUM	TYPICAL	MAXIMUM
Center Frequency (Fo)	MHz	-	924.0	-
Insertion Loss IL(min)	dB	-	3.7	5.5
Pass bandwidth (relative to IL) BW ₃	KHz	-	2000	-
Attenuation: (Reference Level from 0 dB)				
Fo -21.4 MHz	dB	43	48	-
F0 -10.7 MHz	dB	27	31	-

Notes: (1) With Matching Network

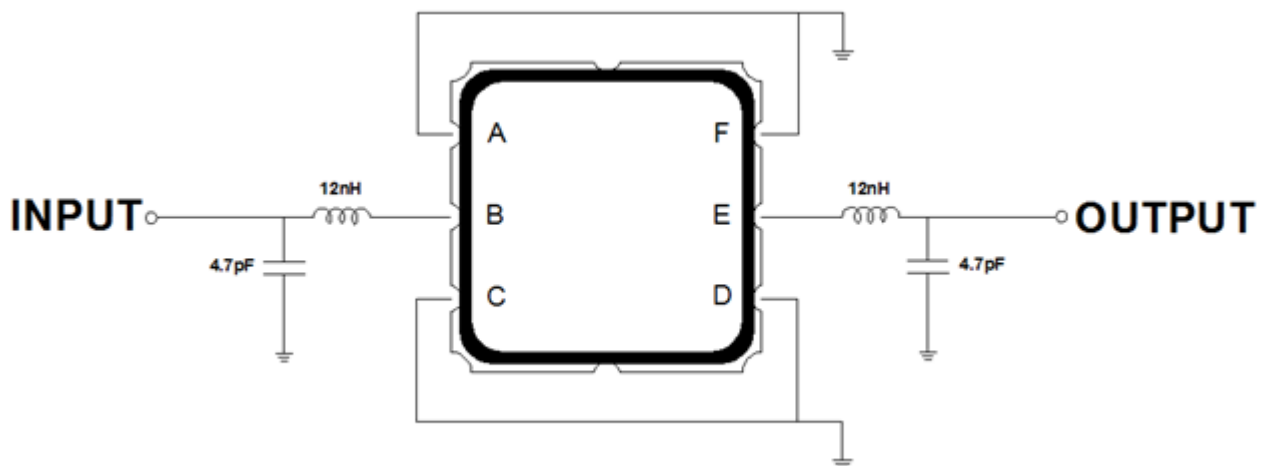
Package Dimensions



Marking Descriptions	
S	TCRF Application
g	Series Number
X	Date Code (Year)
Y	Date Code (Month)

Pin Description	
A, C, D, F	Ground
B	In
E	Out

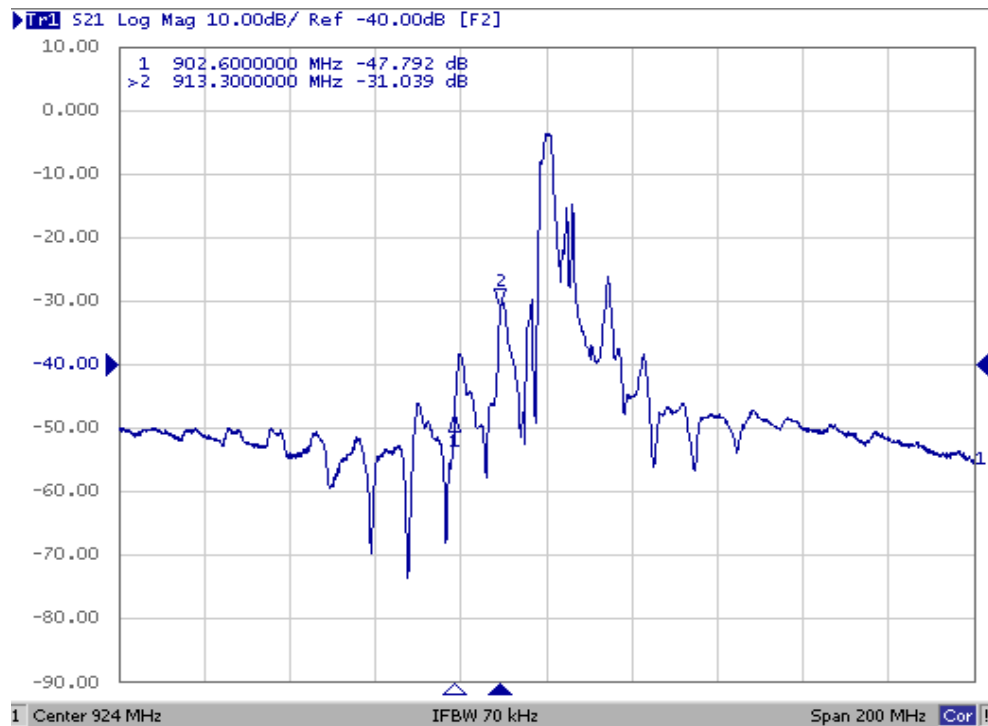
Testing Environment



Source & Load Impedance: 50 Ω

Frequency Characteristics

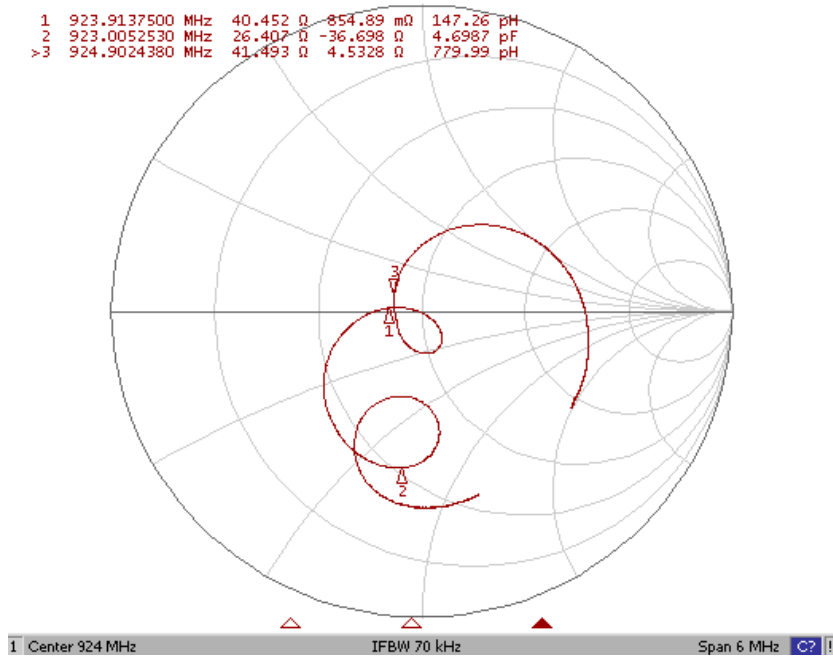
Frequency Response



Smith Chart

▶ Tr2 S11 Smith (R+jX) Scale 1.000U [F2]

1	923.9137500 MHz	40.452 Ω	-854.89 mΩ	147.26 pH
2	923.0052530 MHz	26.407 Ω	-36.698 Ω	4.6987 pF
>3	924.9024380 MHz	41.493 Ω	4.5328 Ω	779.99 pH



▶ Tr3 S22 Smith (R+jX) Scale 1.000U [F2]

1	923.9212500 MHz	39.297 Ω	-3.9193 Ω	43.952 pF
2	923.0052530 MHz	20.423 Ω	-31.040 Ω	5.5551 pF
>3	924.9024380 MHz	40.812 Ω	1.6491 Ω	283.78 pH

