

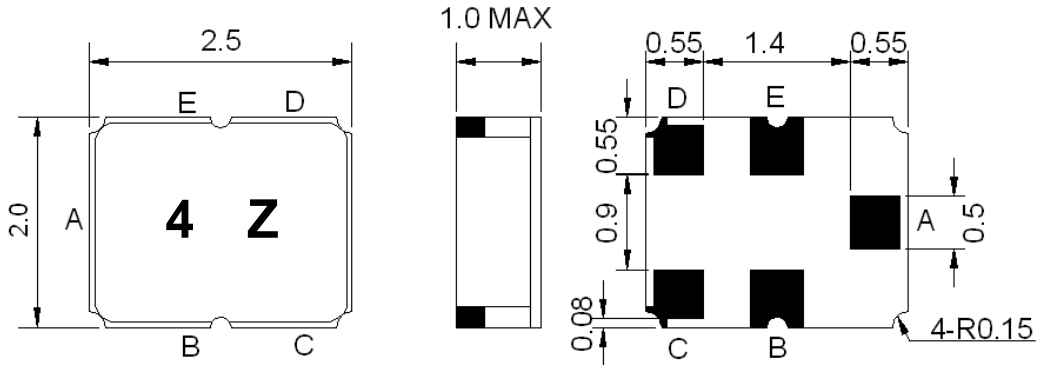
- CDMA, Balanced RF-Rx SAW Filter
- Revision 0:

## Electrical Characteristics

MAXIMUM RATING				
PARAMETERS DESCRIPTION	UNIT	MINIMUM	TYPICAL	MAXIMUM
Operating Temperature Range	°C	-30	-	+85
Storage Temperature Range	°C	-40	-	+85
Maximum DC Voltage	V	-	-	5
Maximum Input Power	dBm	-	-	0
Source Impedance 50Ω CDMA Signal				
Source Impedance (single ended)	Ω	-	50	-
Load Impedance (balanced ended)	Ω	-	200/18nH	-
Package type & size	L1			
Length x Width	mm <sup>2</sup>	-	2.5 x 2.0	-
Height	mm	-	-	1.0

ELECTRICAL SPECIFICATION				
PARAMETERS DESCRIPTION	UNIT	MINIMUM	TYPICAL	MAXIMUM
Center Frequency (Fo)	MHz	-	881.5	-
Insertion Loss within 869~894 MHz	dB	-	2.3	3.0
<b>Attenuation:</b>				
100 ~ 824 MHz	dB	40	55	-
824 ~ 849 MHz	dB	35	44	-
914 ~ 970 MHz	dB	20	25	-
970 ~ 3000 MHz	dB	40	55	-
3000 ~ 6000 MHz	dB	35	50	-
VSWR within 869~894 MHz	-	-	1.7	2.2
Output Amplitude Balance (   S <sub>31</sub> /S <sub>21</sub>   )	dB	-1.0	±0.3	1.0
Output Phase Balance ( Φ(S <sub>31</sub> )-Φ(S <sub>21</sub> )+180° )	degree	-10	±0.9	10

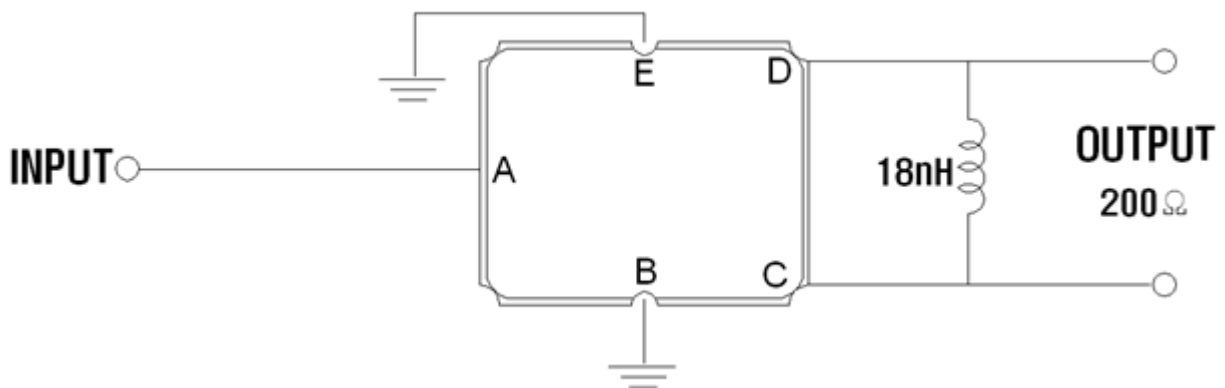
## Package Dimensions



Marking Descriptions	
4	Series Number
Z	Date Code (Year+Month)

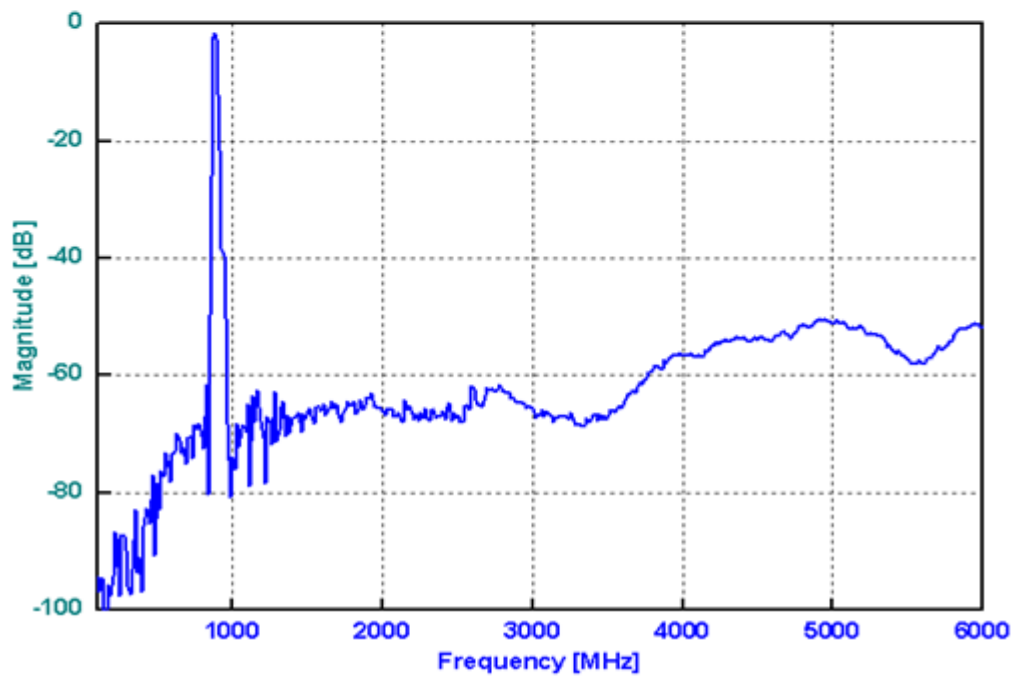
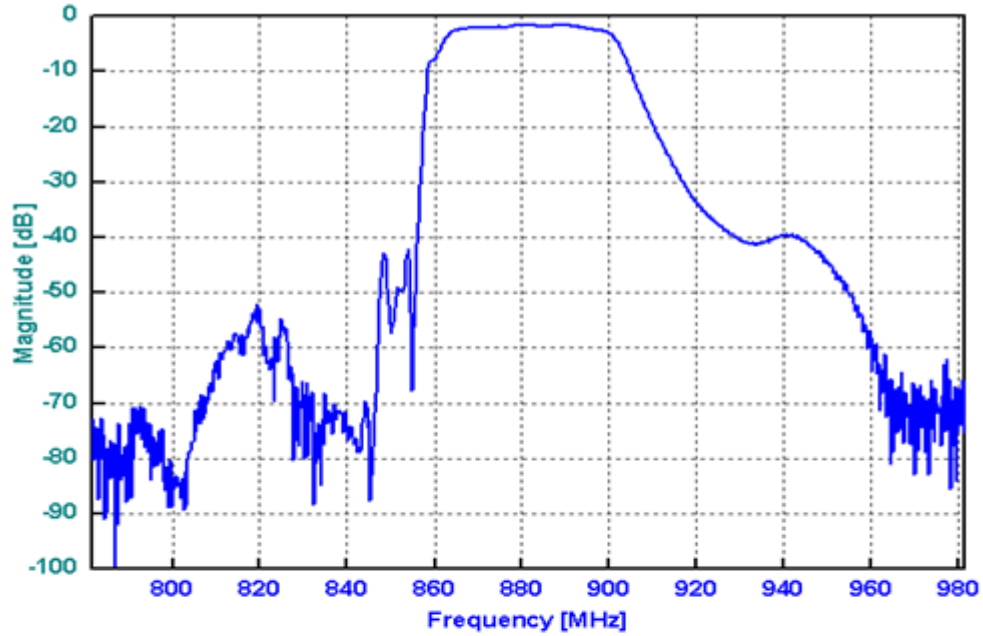
Pin Description	
B, E	Ground
A	In
C, D	Out

## Testing Environment

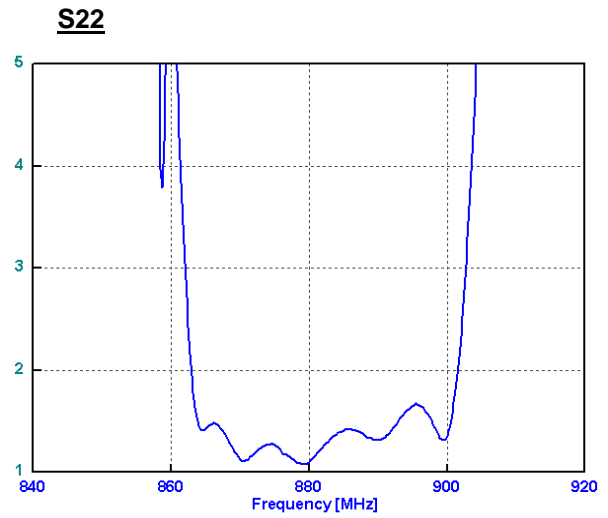
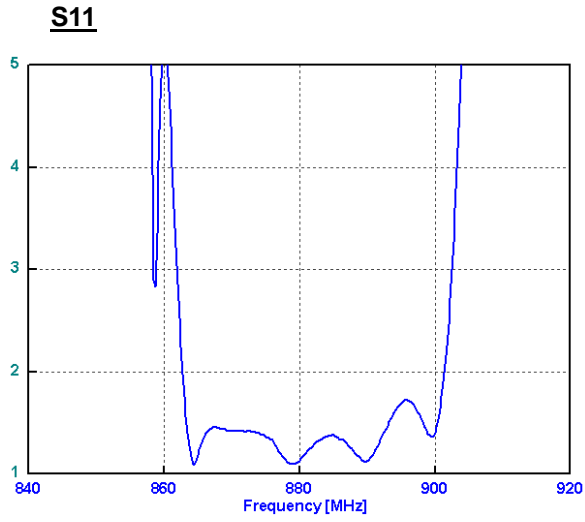


## Frequency Characteristics

Frequency Response



## VSWR



## Smith Chart

