

- Remote Control, RF SAW Filter
- Revision0: May 2005

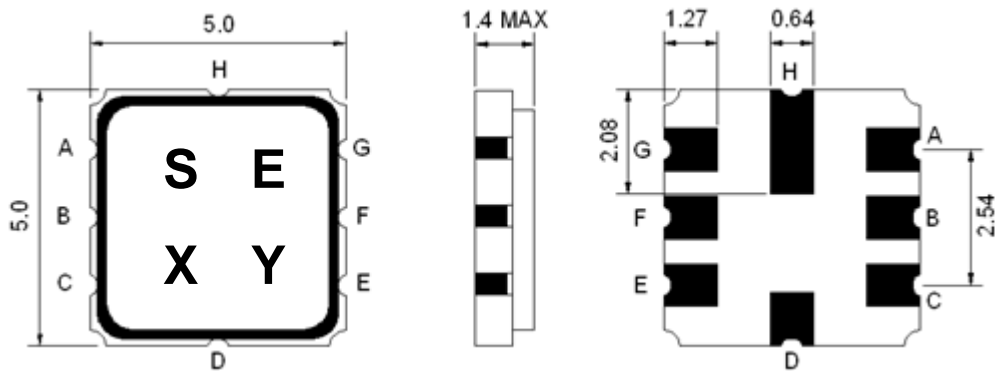
Electrical Characteristics

MAXIMUM RATING				
PARAMETERS DESCRIPTION	UNIT	MINIMUM	TYPICAL	MAXIMUM
Operating Temperature Range	°C	-45	-	+90
Storage Temperature Range	°C	-40	-	+85
Maximum DC Voltage	V	-	-	0
Maximum Input Power	dBm	-	-	0
Source Impedance (single ended) ⁽¹⁾	$\Omega//\rho F$	-	117//3.7	-
Load Impedance (single ended) ⁽¹⁾	$\Omega//\rho F$	-	117//3.7	-
Package type & size	K			
Length x Width	mm ²	-	5.0 x 5.0	-
Height	mm	-	-	1.4

ELECTRICAL SPECIFICATION				
PARAMETERS DESCRIPTION	UNIT	MINIMUM	TYPICAL	MAXIMUM
Center Frequency (Fo)	MHz	-	868.3	-
Insertion Loss within 868.0 ~ 868.78 MHz	dB	-	2.7	4.2
Relative Passband:				
868.0 ~ 868.78 MHz	dB	-	1.0	3.0
867.9 ~ 868.88 MHz	dB	-	1.5	6.0
3dB Bandwidth	KHz	-	1500	-
Relative Attenuation:				
10 ~ 700 MHz	dB	50	55	-
700 ~ 830 MHz	dB	40	45	-
830 ~ 850 MHz	dB	35	40	-
850 ~ 865.02 MHz	dB	25	28	-
871 ~ 874.5 MHz	dB	15	20	-
874.5 ~ 883 MHz	dB	22	26	-
883 ~ 900 MHz	dB	30	35	-
900 ~ 1000 MHz	dB	40	45	-

Notes: (1) With Matching Network

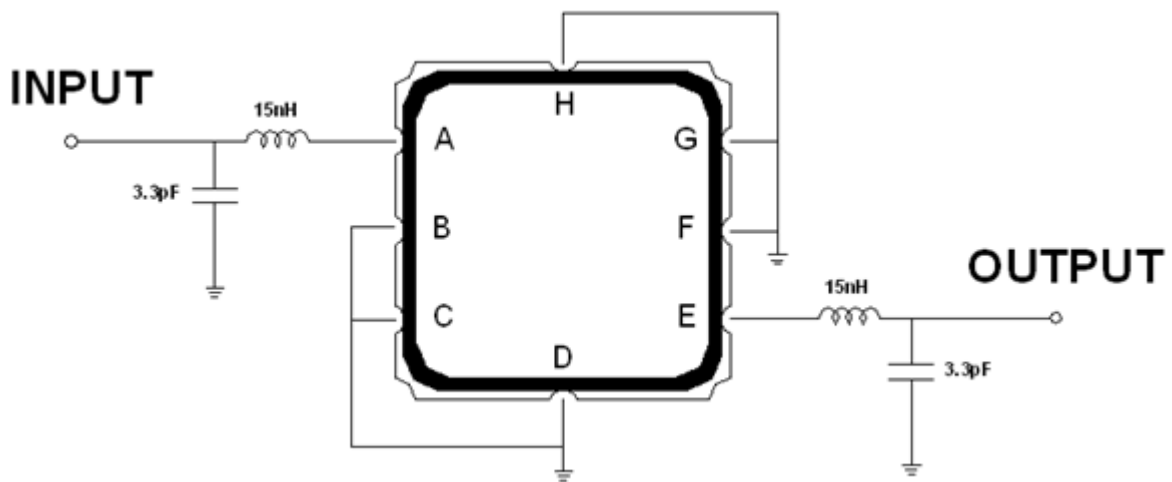
Package Dimensions



Marking Descriptions	
S	TCRF Application
E	Series Number
X	Date Code (Year)
Y	Date Code (Month)

Pin Description	
B, C, D, F, G, H	Ground
A	In
E	Out

Testing Environment



Source & Load Impedance: 50 Ω

Frequency Characteristics

Frequency Response

