

- Remote Control, RF SAW Filter
- Revision 0: September 2005

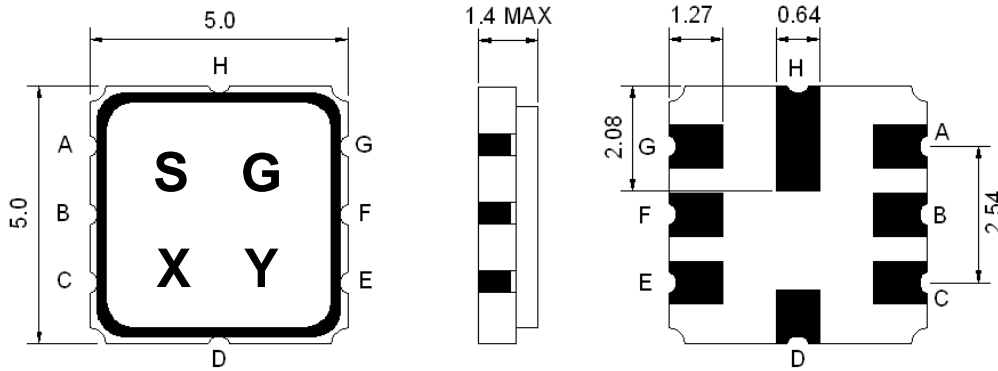
Electrical Characteristics

MAXIMUM RATING				
PARAMETERS DESCRIPTION	UNIT	MINIMUM	TYPICAL	MAXIMUM
Operating Temperature Range	°C	-40	-	+85
Storage Temperature Range	°C	-40	-	+85
Maximum DC Voltage	V	-	-	10
Maximum Input Power	dBm	-	-	10
Source Impedance (single ended) ⁽¹⁾	Ω	-	50	-
Load Impedance (single ended) ⁽¹⁾	Ω	-	50	-
Package type & size	K			
Length x Width	mm ²	-	5.0 x 5.0	-
Height	mm	-	-	1.5

ELECTRICAL SPECIFICATION				
PARAMETERS DESCRIPTION	UNIT	MINIMUM	TYPICAL	MAXIMUM
Center Frequency (Fo)	MHz	-	434.42	-
Insertion Loss within 434.30 ~ 434.54 MHz	dB	-	2.0	4.5
Pass Band Ripple within 434.30 ~ 434.54 MHz	dB	-	1.0	2.0
Attenuation				
10.0 ~ 415.0 MHz	dB	45	50	-
415.0 ~ 429.0 MHz	dB	40	45	-
429.0 ~ 433.42 MHz	dB	15	20	-
435.42 ~ 443.0 MHz	dB	10	15	-
443.0 ~ 550.0 MHz	dB	35	40	-
550.0 ~ 1000.0 MHz	dB	45	50	-

Notes : (1) With Matching Network .

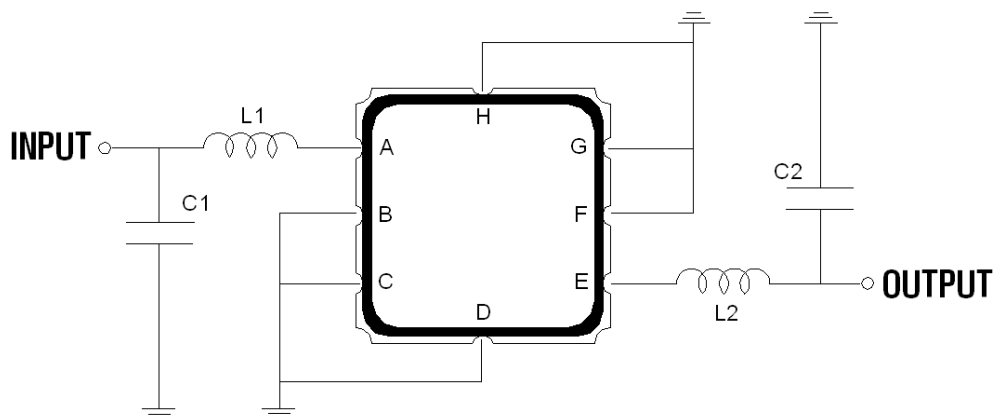
Package Dimensions



Marking Descriptions	
S	TCRF Application
G	Series Number
X	Date Code (Year)
Y	Date Code (Month)

Pin Description	
A, C, D, F, G, H	Ground
B	In
E	Out

Testing Environment



L1=33nH , L2=33nH

C1=5.6pF , C2=5.6pF

Frequency Characteristics

Frequency Response

