

- PHS, IF SAW Filter
- Revision 0: January 2006

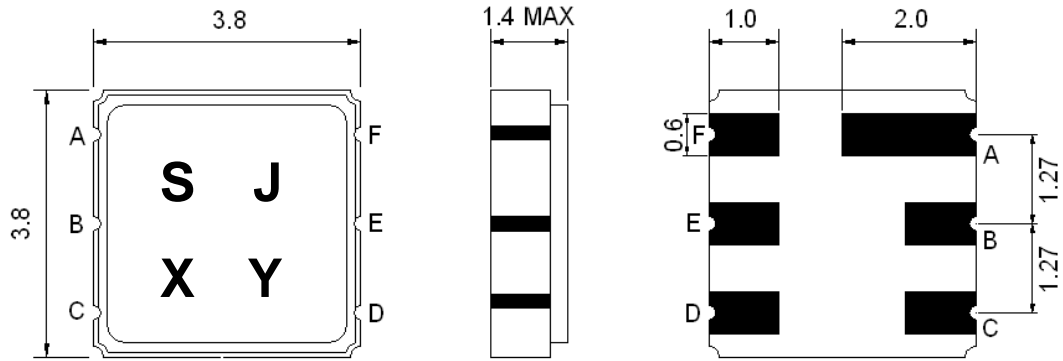
## Electrical Characteristics

MAXIMUM RATING				
PARAMETERS DESCRIPTION	UNIT	MINIMUM	TYPICAL	MAXIMUM
Operating Temperature Range	°C	-10	-	+60
Storage Temperature Range	°C	-40	-	+85
Maximum DC Voltage	V	-	-	0
Maximum Input Power	dBm	-	-	10
Source Impedance (single ended) <sup>(1)</sup>	Ω	-	50	-
Load Impedance (single ended) <sup>(1)</sup>	Ω	-	50	-
Package type & size	P			
Length x Width	mm <sup>2</sup>	-	3.8 x 3.8	-
Height	mm	-	-	1.4

ELECTRICAL SPECIFICATION				
PARAMETERS DESCRIPTION	UNIT	MINIMUM	TYPICAL	MAXIMUM
Center Frequency (Fo)	MHz	-	243.95	-
Insertion Loss at Fo	dB	-	3.2	4.0
Amplitude Ripple within Fo±100 KHz	dB	-	0.9	1.5
Group Delay Ripple within Fo±100 KHz	μsec	-	-	1.2
<b>Attenuation:</b>				
Fo – 23 MHz	dB	55	61	-
Fo - 1.2 MHz	dB	40	54	-
Fo – 600 KHz	dB	30	37	-
Fo + 600 KHz	dB	30	40	-
Fo + 1.2 MHz	dB	40	46	-
Fo + 23 MHz	dB	55	57	-

**Notes :** (1) With matching network (Ref. Testing Environment Circuit as shown below)

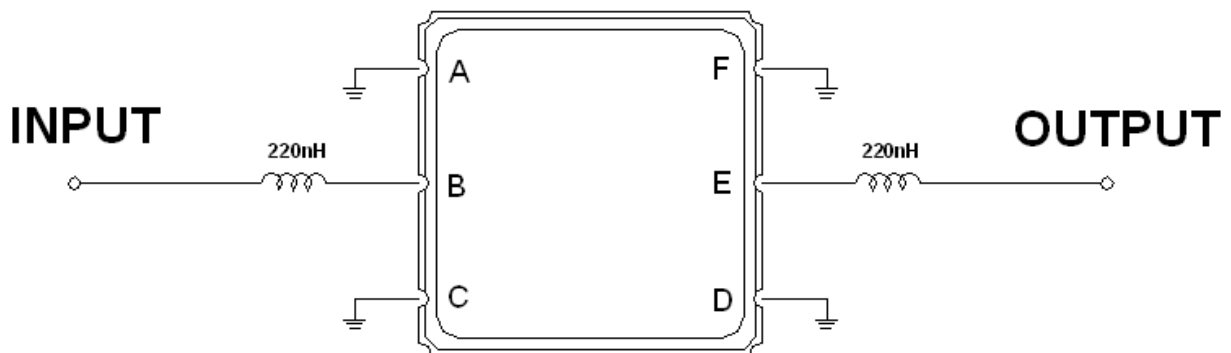
## Package Dimensions



Marking Descriptions	
S	TCRF Application
J	Series Number
X	Date Code (Year)
Y	Date Code (Month)

Pin Description	
A, C, D, F	Ground
B	In
E	Out

## Testing Environment



Source & Load Impedance: 50  $\Omega$

## Frequency Characteristics

**Frequency Response**

